

航诺森能源（常州）有限公司拥有该资料的版权及相关权利，未经权利人许可，任何人不得复制、分发、改编或向公众传播。

ARROXON Energy (Changzhou) Co., Ltd. owns the copyright and related rights of this material. No one may copy, distribute, adapt or disseminate it to the public without the permission of the rights holder.

arroxon

www.arroxon.com

## 致力于成为 全球领先的冷风机制造商

COMMITTED TO BECOMING  
THE WORLD'S LEADING AIR COOLER MANUFACTURER

航诺森能源（常州）有限公司  
ARROXON Energy (Changzhou) Co., Ltd.

江苏省·常州市·武进区·洛阳镇  
Luoyang Town, Wujin District, Changzhou City, Jiangsu Province

0519-8899 1025

0519-8899 1025

info@arroxon.com

www.arroxon.com



# COOL TECH PIONEERS

# ABOUT ARROXON

## 关于航诺森



不断探索未知 引领行业风向  
为客户带来最前沿的温控体验

CONTINUOUSLY EXPLORE THE UNKNOWN AND LEAD THE INDUSTRY TREND  
BRING CUSTOMERS THE MOST CUTTING-EDGE TEMPERATURE CONTROL EXPERIENCE

### 企业简介 Company Profile

航诺森是商用冷风机技术的专家，为全球用户提供大面积空间高效、可靠的温控解决方案。

这些产品和解决方案遍布于食品加工和仓储，冷链和物流转运，农业和温室，商业场所等领域，与我们的日常生活息息相关。

它们是每个人幸福生活的源泉，是人类美好未来的基石；不仅为消费者带来舒适、安全和品质生活，同时也积极应对可持续发展、能效和气候变化带来的挑战。

Hangnuosen is an expert in commercial air cooler technology, providing global users with efficient and reliable temperature control solutions for large areas.

These products and solutions are widely used in food processing and warehousing, cold chain and logistics transportation, agriculture and greenhouses, commercial places and other fields, and are closely related to our daily life.

They are the source of everyone's happy life and the cornerstone of a better future for mankind; they not only bring comfort, safety and quality of life to consumers, but also actively respond to the challenges brought by sustainable development, energy efficiency and climate change.

### 核心价值观 Core Value

#### 创造社会需求

我们不断满足  
人们对于高效、舒适生活的需求变化  
推动社会向前发展

#### Create Social Demand

We continue to meet people's changing needs for efficient and comfortable living and promote social development

#### 持续探索 勇于超越

我们拥抱变化  
不断挑战自我与行业极限  
追求卓越的产品服务体验

#### Continue To Explore And Dare To Surpass

We embrace change, constantly challenge ourselves and the industry's limits and pursue excellent product and service experience

#### 以人为本 尊重与关怀

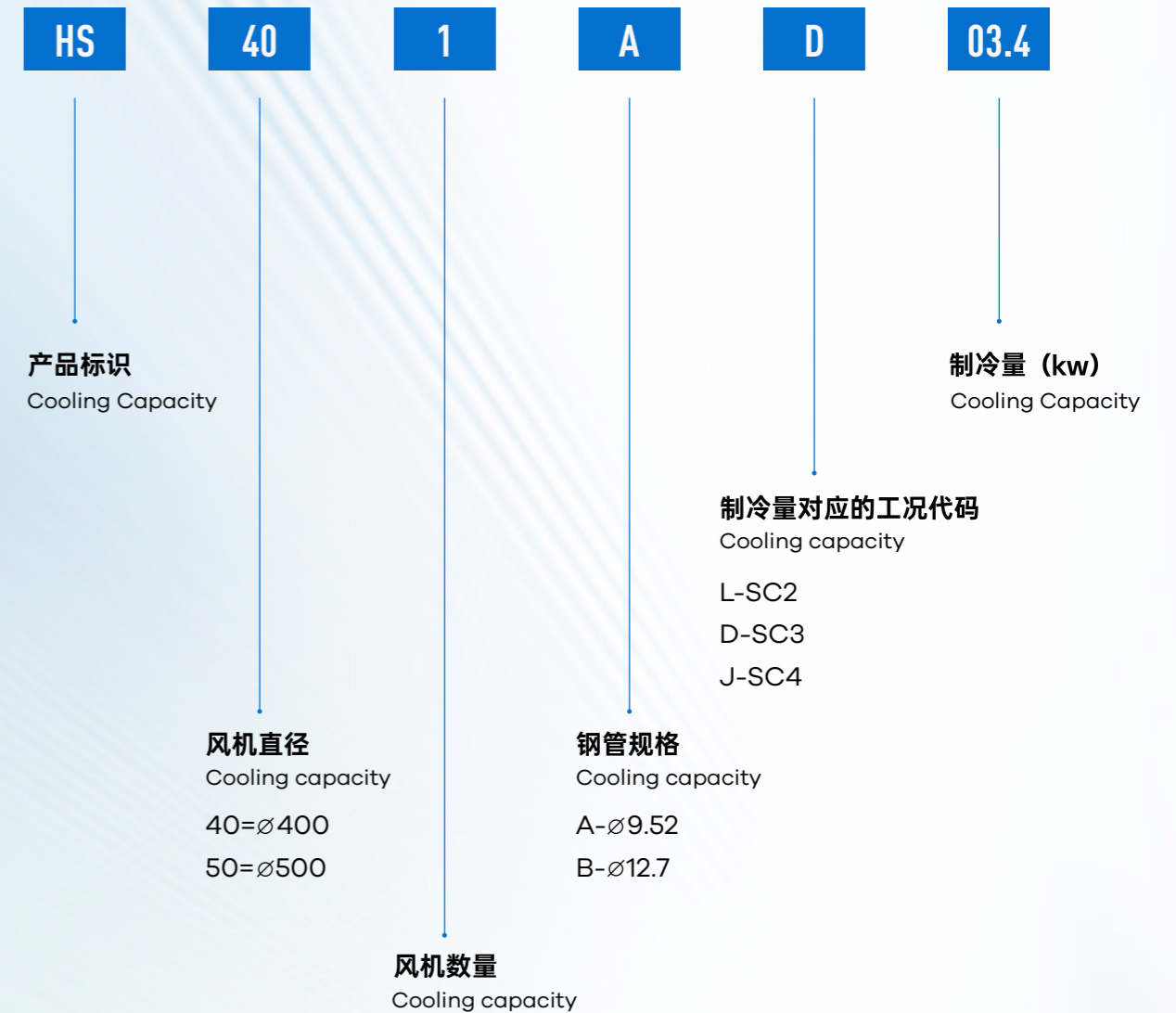
我们尊重每个人的价值  
关怀每一个细节  
共同营造和谐、包容的工作环境

#### People-Oriented Respect And Care

We respect everyone's value, care about every detail, and work together to create a harmonious and inclusive working environment

# AIR COOLER NAMING CONVENTION

## 冷风机命名规则



## 提供高效、智能、环保的温控解决方案

PROVIDE EFFICIENT, INTELLIGENT AND ENVIRONMENTALLY FRIENDLY TEMPERATURE CONTROL SOLUTIONS

# PRODUCT DESCRIPTION

## 产品介绍



# HS-302

## 产品规格

### Product Specifications

风扇	Fan Mot.No		2X300	2X300	2X300
风机功率	Fan Mot.Power	W	2X90	2X90	2X90
电源	Electric System	V/PH/Hz	380/3/50	380/3/50	380/3/50
电加热功率	Electric Defrost	W	2230	2970	3710
管容	Circuit Vol	dm3	2.3	3.2	3.8
净重	Net Weight	kg	26.7	30	33
进液管径	In Tube	mm	12	12	12
出气管径	Out Tube	mm	19	22	22
水盘接口	Drain Connector	φ(GAS)	1	1	1

## 产品参数

### Product Parameters

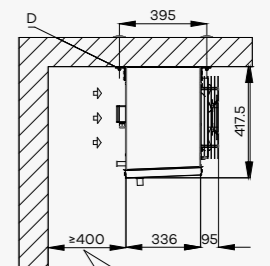
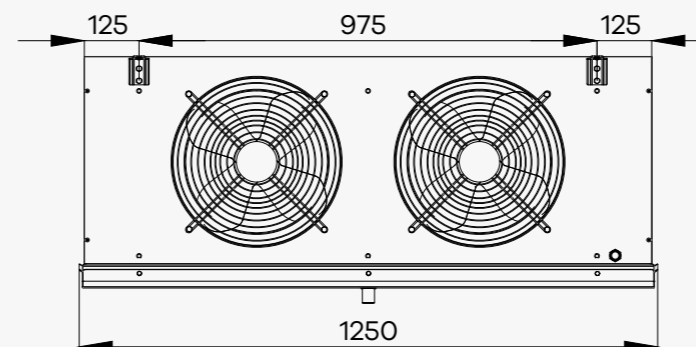
片距	Fin Space 4mm	Models	HS302AL03.6	HS302AL04.7	HS302AL05.3
SC1	Ta10°C Te0°C	kw	5.3	7	7.8
SC2	Ta0°C Te-8°C	kw	3.6	4.7	5.3
面积	Surface	m2	17.3	23	28.9
风量	Air Flow	m3/h	3000	3000	3680
射程	Air Throw	m	7	7	6

片距	Fin Space 6mm	Models	HS302AD02.1	HS302AD02.8	HS302AD03.1
SC2	Ta0°C Te-8°C	kw	3.1	3.9	4.5
SC3	Ta-18°C Te-25°C	kw	2.1	2.8	3.1
SC4	Ta-25°C Te-31°C	kw	1.7	2.2	2.5
面积	Surface	m2	11.5	15.3	19.2
风量	Air Flow	m3/h	3000	3000	3680
射程	Air Throw	m	7	7	6

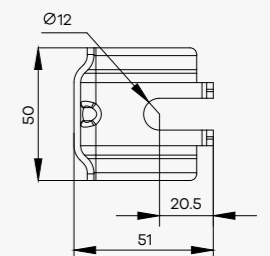
片距	Fin Space 9mm	Models	HS302AJ01.5	HS302AJ02.0	HS302AJ02.3
SC3	Ta-18°C Te-25°C	kw	1.9	2.5	2.9
SC4	Ta-25°C Te-31°C	kw	1.5	2	2.3
SC5	Ta-34°C Te-40°C	kw	1.3	1.8	2
面积	Surface	m2	7.7	10.2	12.8
风量	Air Flow	m3/h	3000	3000	3680
射程	Air Throw	m	7	7	6

## 外形尺寸

### Dimensional Date



必要的进风距离是风机的制冷能力保证  
The necessary air inlet distance is an important safeguard measure for cooling capacity



# PRODUCT DESCRIPTION

## 产品介绍



# HS-401

### 产品规格

#### Product Specifications

风扇	Fan Mot.No		1X400	1X400	1X400
风机功率	Fan Mot.Power	W	1X180	1X205	1X205
电源	Electric System	V/PH/Hz	380/3/50	380/3/50	380/3/50
电加热功率	Electric Defrost	W	2260	2820	2820
管容	Circuit Vol	dm3	2.46	3.2	3.84
净重	Net Weight	kg	25.2	26.5	28.5
进液管径	In Tube	mm	12	12	12
出气管径	Out Tube	mm	22	22	22
水盘接口	Drain Connector	φ(GAS)	1	1	1

### 产品参数

#### Product Parameters

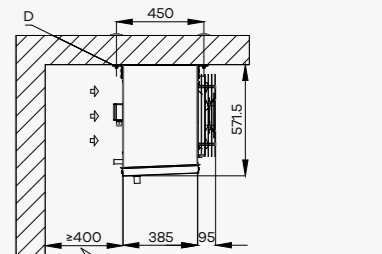
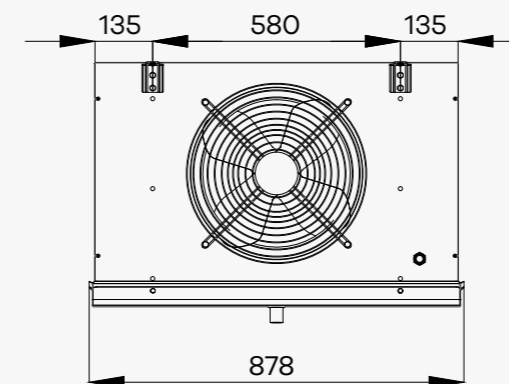
片距	Fin Space 4mm	Models	HS401AL04.2	HS401AL05.0	HS401AL05.5
SC1	Ta10°C Te0°C	kw	6.1	7.2	8.1
SC2	Ta0°C Te-8°C	kw	4.2	5	5.5
面积	Surface	m2	18.7	28.1	28.1
风量	Air Flow	m3/h	2900	2650	2600
射程	Air Throw	m	7	7	7

片距	Fin Space 6mm	Models	HS401AD02.5	HS401AD03.0	HS401AD03.4
SC2	Ta0°C Te-8°C	kw	3.6	4.3	4.9
SC3	Ta-18°C Te-25°C	kw	2.5	3.0	3.4
SC4	Ta-25°C Te-31°C	kw	2.0	2.4	2.7
面积	Surface	m2	12.5	18.7	18.7
风量	Air Flow	m3/h	3200	2900	2800
射程	Air Throw	m	8	7	7

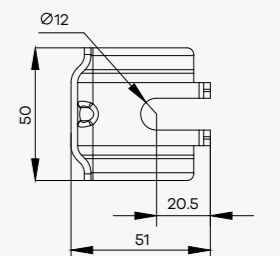
片距	Fin Space 4mm	Models	HS401AJ01.8	HS401AJ02.2	HS401AJ02.5
SC3	Ta-18°C Te-25°C	kw	2.3	2.8	3.2
SC4	Ta-25°C Te-31°C	kw	1.8	2.2	2.5
SC5	Ta-34°C Te-40°C	kw	1.6	1.9	2.2
面积	Surface	m2	8.3	12.5	12.5
风量	Air Flow	m3/h	3300	3250	3200
射程	Air Throw	m	9	9	9

### 外形尺寸

#### Dimensional Date



必要的进风距离是风机的制冷能力保证  
The necessary air inlet distance is an important safeguard measure for cooling capacity



# PRODUCT DESCRIPTION

## 产品介绍



# HS-402

### 产品规格

#### Product Specifications

风扇	Fan Mot.No		2X400	2X400	2X400	2X400
风机功率	Fan Mot.Power	W	2X180	2X180	2X205	2X205
电源	Electric System	V/PH/Hz	380/3/50	380/3/50	380/3/50	380/3/50
电加热功率	Electric Defrost	W	4273	4273	5300	5300
管容	Circuit Vol	dm3	3.62	4.94	6.2	7.4
净重	Net Weight	kg	38.4	42.5	46.5	50.3
进液管径	In Tube	mm	12	16	16	16
出气管径	Out Tube	mm	22	28	28	28
水盘接口	Drain Connector	φ(GAS)	1	1	1	1

### 产品参数

#### Product Parameters

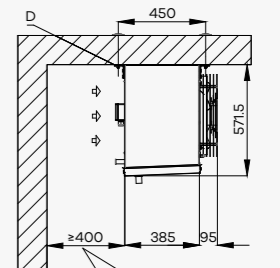
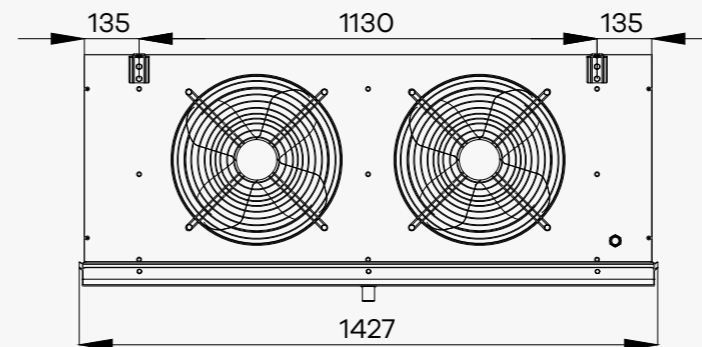
片距	Fin Space 4mm	Models	HS402AL07.0	HS402AL08.4	HS402AL09.9	HS402AL10.9
SC1	Ta10°C Te0°C	kw	10.1	12.2	14.4	16.0
SC2	Ta0°C Te-8°C	kw	7	8.4	9.9	10.9
面积	Surface	m2	28.1	37.5	46.7	56.3
风量	Air Flow	m3/h	5800	5700	5200	5200
射程	Air Throw	m	8	8	8	8

片距	Fin Space 6mm	Models	HS402AD04.2	HS402AD05.0	HS402AD06.0	HS402AD06.6
SC2	Ta0°C Te-8°C	kw	5.8	7.2	8.6	9.6
SC3	Ta-18°C Te-25°C	kw	4.2	5.0	6.0	6.6
SC4	Ta-25°C Te-31°C	kw	3.4	3.9	4.7	5.2
面积	Surface	m2	19	25.2	37.9	37.9
风量	Air Flow	m3/h	6400	6300	5800	5800
射程	Air Throw	m	9	9	8	8

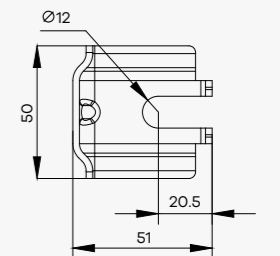
片距	Fin Space 9mm	Models	HS402AJ03.3	HS402AJ03.6	HS402AJ04.4	HS402AJ04.9
SC3	Ta-18°C Te-25°C	kw	4.2	4.6	5.5	6.2
SC4	Ta-25°C Te-31°C	kw	3.3	3.6	4.4	4.9
SC5	Ta-34°C Te-40°C	kw	2.8	3.1	3.8	4.2
面积	Surface	m2	14.7	19.7	25	29.3
风量	Air Flow	m3/h	6600	6500	6300	6300
射程	Air Throw	m	10	10	9	9

### 外形尺寸

#### Dimensional Date

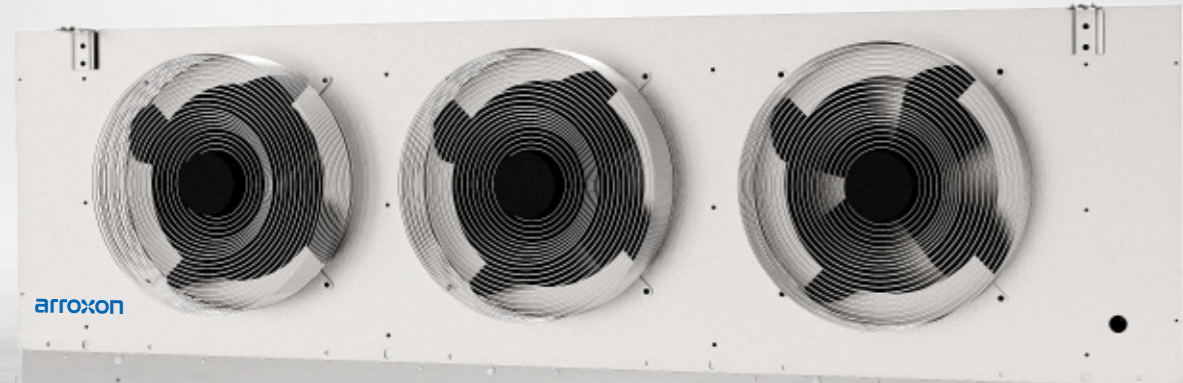


必要的进风距离是风机的制冷能力保证  
The necessary air inlet distance is an important safeguard measure for cooling capacity



# PRODUCT DESCRIPTION

## 产品介绍



# HS-403

## 产品规格

### Product Specifications

风扇	Fan Mot.No		3X400	3X400	3X400
风机功率	Fan Mot.Power	W	3X180	3X205	3X205
电源	Electric System	V/PH/Hz	380/3/50	380/3/50	380/3/50
电加热功率	Electric Defrost	W	5960	7450	8940
管容	Circuit Vol	dm3	7.4	9.18	11.2
净重	Net Weight	kg	59	65	69
进液管径	In Tube	mm	16	22	22
出气管径	Out Tube	mm	28	28	35
水盘接口	Drain Connector	φ(GAS)	1	1	1

## 产品参数

### Product Parameters

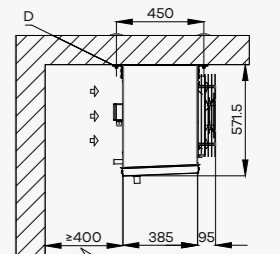
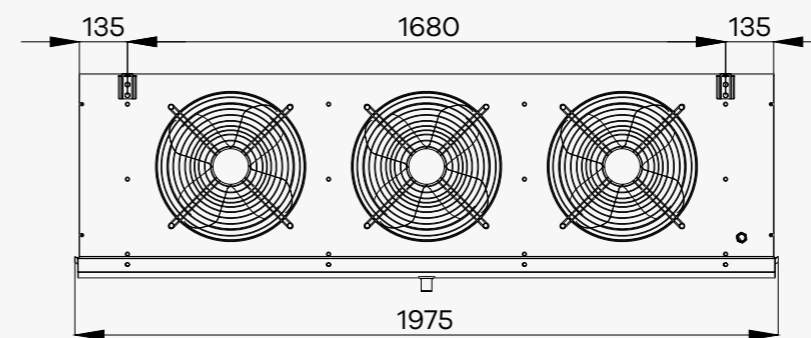
片距	Fin Space 4mm	Models	HS403AL12.1	HS403AL14.5	HS403AL16.2
SC1	Ta10°C Te0°C	kw	17.7	21.1	23.7
SC2	Ta0°C Te-8°C	kw	12.1	14.5	16.2
面积	Surface	m2	56.2	70	84.4
风量	Air Flow	m3/h	8700	8000	7800
射程	Air Throw	m	10	9	9

片距	Fin Space 6mm	Models	HS403AD07.1	HS403AD08.7	HS403AD09.7
SC2	Ta0°C Te-8°C	kw	10.5	12.7	14.4
SC3	Ta-18°C Te-25°C	kw	7.1	8.7	9.7
SC4	Ta-25°C Te-31°C	kw	5.5	6.8	7.7
面积	Surface	m2	37.5	47	56.2
风量	Air Flow	m3/h	9600	8700	8400
射程	Air Throw	m	10	9	9

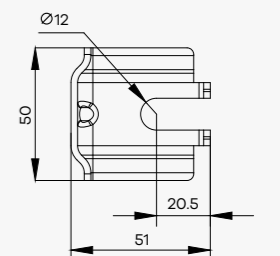
片距	Fin Space 9mm	Models	HS403AJ5.2	HS403AJ6.4	HS403AJ7.2
SC3	Ta-18°C Te-25°C	kw	6.6	8.0	9.2
SC4	Ta-25°C Te-31°C	kw	5.2	6.4	7.2
SC5	Ta-34°C Te-40°C	kw	4.3	5.4	6.1
面积	Surface	m2	25	31.2	37.5
风量	Air Flow	m3/h	9900	9800	9600
射程	Air Throw	m	10	9	9

## 外形尺寸

### Dimensional Date



必要的进风距离是风机的制冷能力保证  
The necessary air inlet distance is an important safeguard measure for cooling capacity



# PRODUCT DESCRIPTION

## 产品介绍



# HS-404

## 产品规格

### Product Specifications

风扇	Fan Mot.No		4X400	4X400
风机功率	Fan Mot.Power	W	4X205	4X205
电源	Electric System	V/PH/Hz	380/3/50	380/3/50
电加热功率	Electric Defrost	W	10080	12100
管容	Circuit Vol	dm3	12.2	14.7
净重	Net Weight	kg	80	88
进液管径	In Tube	mm	22	28
出气管径	Out Tube	mm	35	42
水盘接口	Drain Connector	φ(GAS)	1	1

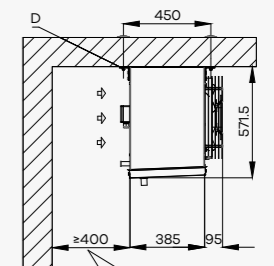
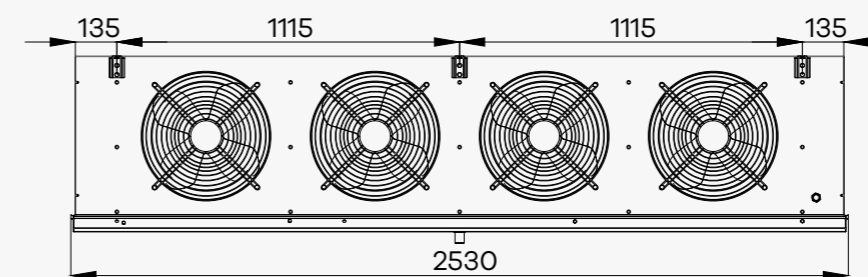
## 产品参数

### Product Parameters

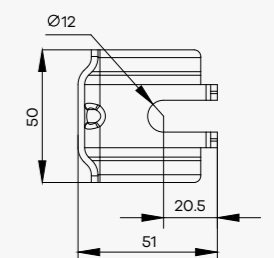
片距	Fin Space 4mm	Models	HS404AL18.6	HS404AL22.1
SC1	Ta10°C Te0°C	kw	27.3	32.5
SC2	Ta0°C Te-8°C	kw	18.6	22.1
面积	Surface	m2	112.5	112.5
风量	Air Flow	m3/h	10000	10000
射程	Air Throw	m	10	10
片距	Fin Space 6mm	Models	HS404AD11.9	HS404AD13.5
SC2	Ta0°C Te-8°C	kw	17.1	19.6
SC3	Ta-18°C Te-25°C	kw	11.9	13.5
SC4	Ta-25°C Te-31°C	kw	9.4	10.8
面积	Surface	m2	75	75
风量	Air Flow	m3/h	11200	11200
射程	Air Throw	m	10	10
片距	Fin Space 9mm	Models	HS404AJ8.7	HS404AJ10.1
SC3	Ta-18°C Te-25°C	kw	10.9	12.8
SC4	Ta-25°C Te-31°C	kw	8.7	10.1
SC5	Ta-34°C Te-40°C	kw	7.5	8.8
面积	Surface	m2	50	50
风量	Air Flow	m3/h	13000	13000
射程	Air Throw	m	10	10

## 外形尺寸

### Dimensional Date

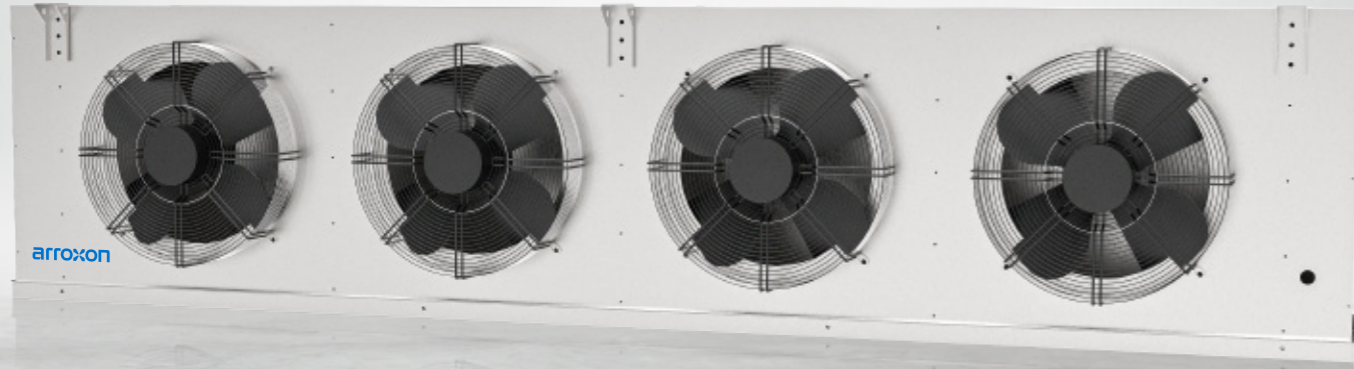


必要的进风距离是风机的制冷能力保证  
The necessary air inlet distance is an important safeguard measure for cooling capacity



# PRODUCT DESCRIPTION

## 产品介绍



# HS-504

### 产品规格

#### Product Specifications

风扇	Fan Mot.No		4X500	4X500	4X500
风机功率	Fan Mot.Power	W	4X414	4X750	4X750
电源	Electric System	V/PH/Hz	380/3/50	380/3/50	380/3/50
电加热功率	Electric Defrost	W	12200	14640	14640
管容	Circuit Vol	dm3	19	22	25
净重	Net Weight	kg	113	143	150
进液管径	In Tube	mm	28	28	28
出气管径	Out Tube	mm	42	42	42
水盘接口	Drain Connector	φ(GAS)	1	1	1

### 产品参数

#### Product Parameters

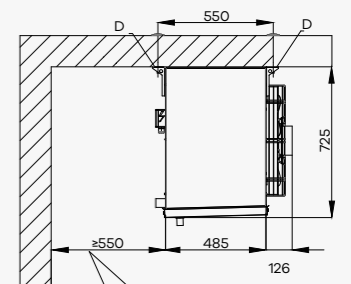
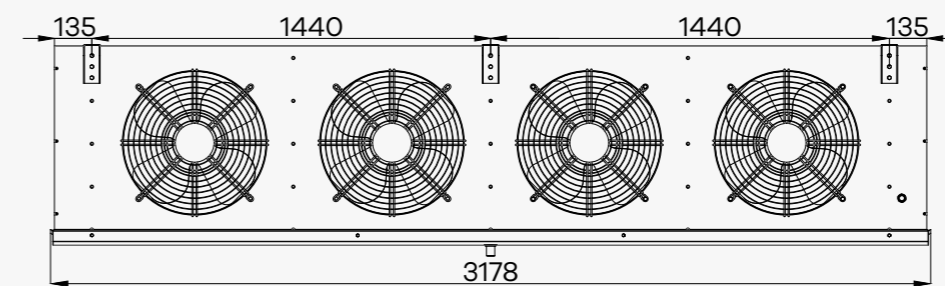
片距	Fin Space 4mm	Models	HS504AL26.4	HS504AL34.4	HS504AL37.7
SC1	Ta10°C Te0°C	kw	38.6	50	54.7
SC2	Ta0°C Te-8°C	kw	26.4	34.4	37.7
面积	Surface	m2	124.9	156.2	187.1
风量	Air Flow	m3/h	18000	18000	17500
射程	Air Throw	m	17	17	17

片距	Fin Space 6mm	Models	HS504AD16.5	HS504AD20.8	HS504AD25.5
SC2	Ta0°C Te-8°C	kw	24.2	30.5	37.4
SC3	Ta-18°C Te-25°C	kw	16.5	20.8	25.5
面积	Surface	m2	83.2	104.1	124.1
风量	Air Flow	m3/h	20000	20000	19000
射程	Air Throw	m	17	17	17

片距	Fin Space 9mm	Models	HS504AJ12.1	HS504AJ15.0	HS504AJ18.4
SC3	Ta-18°C Te-25°C	kw	15.4	19.2	24.1
SC4	Ta-25°C Te-31°C	kw	12.1	15	18.4
SC5	Ta-34°C Te-40°C	kw	10.1	12.4	15.2
面积	Surface	m2	55.5	69.4	83.1
风量	Air Flow	m3/h	22000	22000	21000
射程	Air Throw	m	17	17	17

### 外形尺寸

#### Dimensional Date



必要的进风距离是风机的制冷能力保证  
The necessary air inlet distance is an important safeguard measure for cooling capacity

